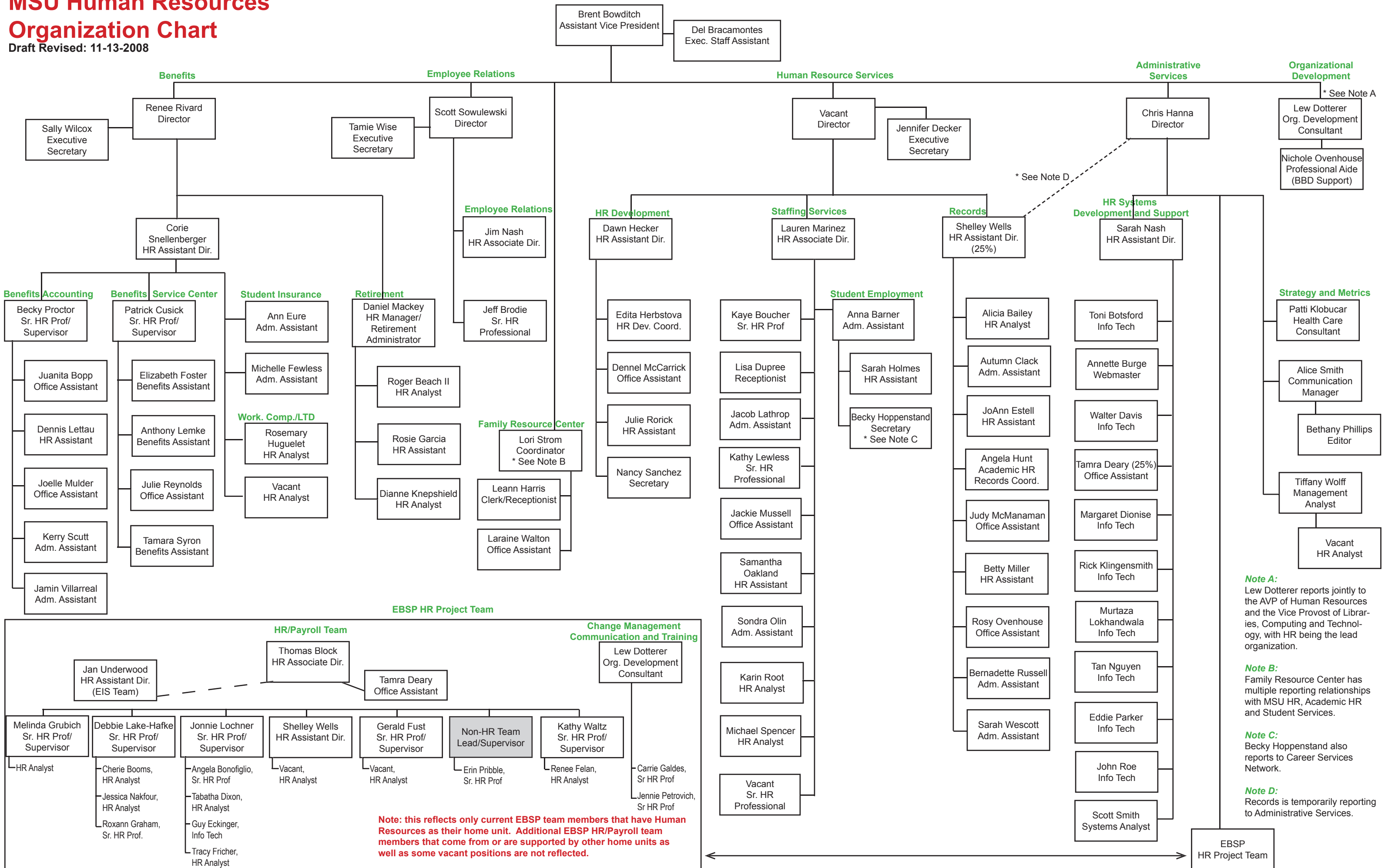


# MSU Human Resources Organization Chart

Draft Revised: 11-13-2008



**Note:** this reflects only current EBSP team members that have Human Resources as their home unit. Additional EBSP HR/Payroll team members that come from or are supported by other home units as well as some vacant positions are not reflected.

**Note A:**  
Lew Dotterer reports jointly to the AVP of Human Resources and the Vice Provost of Libraries, Computing and Technology, with HR being the lead organization.

**Note B:**  
Family Resource Center has multiple reporting relationships with MSU HR, Academic HR and Student Services.

**Note C:**  
Becky Hoppenstand also reports to Career Services Network.

**Note D:**  
Records is temporarily reporting to Administrative Services.

EBSP HR Project Team